

### LIGHT SMMS NON-WOVEN "SP" SPECIALIST GOWN

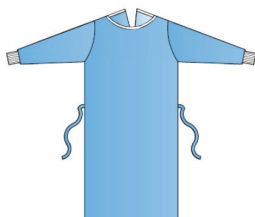


Recommended for short surgical procedures with limited presence of fluids and with low risk of infection.

- in LIGHT SMMS NON-WOVEN FABRIC - light blue
- model identification collar: WHITE
- 4 internal/external ties
- ultrasonic sealed
- 2 hand towels
- **wrapped in sterile wrap. Dispenser box - Sterile**

CODE	SIZE size	LENGHT cm	STERILE	SECONDARY PACKAGING pieces per box
500019CCBSMD	S	110	YES	30
500013CCBSMD	M	115	YES	30
500014CCBSMD	L	130	YES	30
500015CCBSMD	XL	135	YES	30
500016CCBSMD	XXL	145	YES	30
500020CCBSMD	LL	145	YES	30
500017CCBSMD	XLL	145	YES	30
500018CCBSMD	2XLL	165	YES	30

### SMMS NON-WOVEN SPECIALIST GOWN

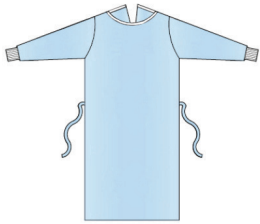


Recommended for medium-duration surgical procedures with the presence of fluids and medium risk of infection.

- in LIGHT SMMS NON-WOVEN FABRIC - light blue
- model identification collar: WHITE
- 4 internal/external ties
- ultrasonic sealed
- 2 hand towels
- **wrapped in sterile wrap. Dispenser box - Sterile**

CODE	SIZE size	LENGHT cm	STERILE	SECONDARY PACKAGING pieces per box
500001CABSMD	S	115	YES	30
500002CABSMD	M	120	YES	30
500003CABSMD	L	130	YES	30
500004CABSMD	XL	140	YES	30
500005CABSMD	XXL	150	YES	30
500030CABSMD	LL	150	YES	30
500011CABSMD	XLL	150	YES	30
500012CABSMD	2XLL	170	YES	30

**SPUNLACED NON-WOVEN SPECIALIST GOWN**

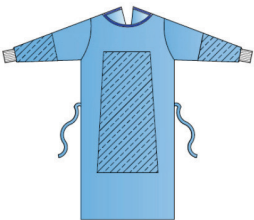


Recommended for medium-duration surgical procedures with the presence of fluids and medium risk of infection.

- in SPUNLACED NON-WOVEN FABRIC - light blue
- model identification collar: WHITE
- 4 internal/external ties
- double seam
- 2 hand towels
- **wrapped in sterile wrap. Dispenser box - Sterile**

CODE	SIZE size	LENGHT cm	STERILE	SECONDARY PACKAGING pieces per box
500001DABSME	S	115	YES	30
500002DABSME	M	120	YES	30
500003DABSME	L	130	YES	30
500004DABSME	XL	140	YES	30
500005DABSME	XXL	150	YES	30

**LIGHT SMMS NON-WOVEN "SP" REINFORCED GOWN**



Recommended for medium-duration surgical procedures with the presence of fluids and high risk of infection.

- in LIGHT SMMS NON-WOVEN FABRIC - light blue
- model identification collar: BLUE
- waterproof reinforcement on the front and forearms
- 4 internal/external ties
- ultrasonic sealed
- 2 hand towels
- **wrapped in sterile wrap. Dispenser box - Sterile**

CODE	SIZE size	LENGHT cm	STERILE	SECONDARY PACKAGING pieces per box
500019CCBSMD	S	110	YES	30
500013CCBSMD	M	115	YES	30
500014CCBSMD	L	130	YES	30
500015CCBSMD	XL	135	YES	30
500016CCBSMD	XXL	145	YES	30
500020CCBSMD	LL	145	YES	30
500017CCBSMD	XLL	145	YES	30
500018CCBSMD	2XLL	165	YES	30

### LIGHT SMMS NON-WOVEN EXTRA-LONG "SP" REINFORCED GOWN

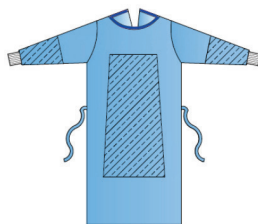


Recommended for medium-duration surgical procedures with the presence of fluids and high infection risk.

- in LIGHT SMMS NON-WOVEN FABRIC - light blue
- model identification collar: YELLOW
- forearm and full front waterproof reinforcement
- 4 internal/external ties
- ultrasonic sealed
- 2 hand towels
- **wrapped in sterile wrap. Dispenser box - Sterile**

CODE	SIZE size	LENGHT cm	STERILE	SECONDARY PACKAGING pieces per box
506010CCBSMD	M	120	YES	30
506011CCBSMD	L	130	YES	30
506013CCBSMD	XL	140	YES	30
506015CCBSMD	XXL	150	YES	30

### SMMS NON-WOVEN GOWN WITH BREATHABLE WATERPROOF REINFORCEMENT

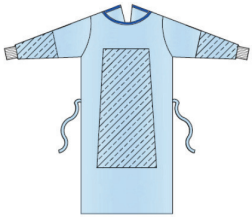


Recommended for long surgical procedures with the presence of fluids and high risk of infection and requiring a superior level of comfort.

- in tri-layer non-woven fabric - light blue
- model identification collar: BLUE
- fully waterproof all over
- fully breathable all over
- ultrasonic sealed
- 2 hand towels
- **wrapped in sterile wrap. Dispenser box - Sterile**

CODE	SIZE size	LENGHT cm	STERILE	SECONDARY PACKAGING pieces per box
501001CABSMD	S	115	YES	30
501002CABSMD	M	120	YES	30
501003CABSMD	L	130	YES	30
501004CABSMD	XL	140	YES	30
501005CABSMD	XXL	150	YES	30
501021CABSMD	LL	150	YES	30
501011CABSMD	XLL	150	YES	30
501012CABSMD	2XLL	170	YES	30

**SPUNLACED NON-WOVEN GOWN WITH BREATHABLE WATERPROOF REINFORCEMENT**



Recommended for long surgical procedures with the presence of fluids and high infection risk and requiring a superior level of comfort.

- in spunlaced non-woven fabric - light blue
- model identification collar: BLUE
- breathable waterproof reinforcement on the front and forearms
- 4 internal/external ties
- double seam
- 2 hand towels
- **wrapped in sterile wrap. Dispenser box - Sterile**

CODE	SIZE size	LENGHT cm	STERILE	SECONDARY PACKAGING pieces per box
501001DABSME	S	115	YES	30
501002DABSME	M	120	YES	30
501003DABSME	L	130	YES	30
501004DABSME	XL	140	YES	30
501005DABSME	XXL	150	YES	30

**TRI-LAYER NON-WOVEN FULL BARRIER GOWN**

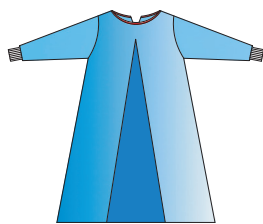


Recommended for surgical procedures with very high risk of infection and a significant presence of fluids and requiring maximum comfort.

- fully waterproof all over
- model identification collar: PURPLE
- resistant to Phi-X174 bacteriophage and viruses (ISO 16604 compliant)
- ultrasonic sealed
- 2 hand towels
- **avvolto in foglio Sterile wrap. DISPENSER BOX - Sterile**

CODE	SIZE size	LENGHT cm	STERILE	SECONDARY PACKAGING pieces per box
502001BDBSMD	S	115	YES	30
502002BDBSMD	M	120	YES	30
502003BDBSMD	L	130	YES	30
502004BDBSMD	XL	140	YES	30
502005BDBSMD	XXL	150	YES	30

### SMMS - PE/PP NON-WOVEN UROLOGY GOWN



Recommended for all urological procedures and any other procedure with a large quantity of fluids.

- front and sleeves in fully waterproof PE/PP non-woven fabric
- back in breathable water-repellent SMMS non-woven fabric
- model identification collar: RED
- optimal coverage of operator in sitting position
- 4 internal/external ties
- ultrasonic sealed
- 2 hand towels
- **wrapped in sterile wrap. Dispenser box - Sterile**

CODE	SIZE size	LENGHT cm	STERILE	SECONDARY PACKAGING pieces per box
503008AHBSME	M	120	YES	30
503009AHBSME	L	130	YES	30
503010AHBSME	XL	140	YES	30
503011AHBSME	XXL	150	YES	30

### NON-STERILE SURGICAL GOWNS

#### LIGHT SMMS NON-WOVEN "SP" SPECIALIST GOWN



- with 2 hand towels
- wrapped in sterile wrap
- **non sterile**

CODE	SIZE size	LENGHT cm	STERILE	SECONDARY PACKAGING pieces per box
500013CC3NMD	M	115	NO	50
500014CC3NMD	L	130	NO	50
500015CC3NMD	XL	135	NO	50
500016CC3NMD	XXL	145	NO	50

#### LIGHT SMMS NON-WOVEN "SP" REINFORCED GOWN



- with 2 hand towels
- wrapped in sterile wrap
- **non sterile**

CODE	SIZE size	LENGHT cm	STERILE	SECONDARY PACKAGING pieces per box
501013CC3NMD	M	115	YES	50
501014CC3NMD	L	130	YES	50
501015CC3NMD	XL	135	YES	50
501016CC3NMD	XXL	145	YES	50